

# Kidspac

COMMUNITY HUB

## *Term 3 Program*

### *Connect with Us*



Call Us  
**0483 987 450**



Visit Our Website  
[www.kidspachomehub.com.au](http://www.kidspachomehub.com.au)



Email Us  
[admin@kidspacclub.com.au](mailto:admin@kidspacclub.com.au)



Our Location  
**19 Third Ave, Caloundra, 4551**



## About Us

At Kidspace Homeschooling Hub, we provide a vibrant and enriching space for homeschoolers to engage in meaningful play, build essential life skills, and form lasting friendships.

Our drop-off care service is designed to support homeschooling families by fostering social connections and community engagement in a safe and nurturing environment.

Kidspace is a purposefully different community hub with an experienced educational team dedicated to providing children with community centred opportunities for recreation, leisure & holistic learning.

***Kidspace community hub provides education through real world experiences.***

## OUR CORE VALUES

### Community

We are committed to facilitating an inclusive community hub where children and families experience a strong sense of belonging, connection & support.

### Connection

We are committed to fostering connection through social opportunities, community engagement and environmental care.

### Experiential Learning

We continuously strive to provide experiential opportunities that stimulate, challenge and engage children in life skills and holistic learning.





# Our Experiences

*Some of our experiential learning includes:*

- **Nature-Based Adventures** – Excursions to parks, reserves, and natural spaces along the Sunshine Coast.
- **Creative Arts & Performance** – Opportunities for visual arts, music, dance, and drama.
- **Mind-Body Connection Workshops** – Social-emotional learning through movement and mindfulness.
- **Interactive Science & STEM** – Engaging activities that inspire innovation and curiosity.
- **Collaborative Games & Play** – Sports, group challenges, and meaningful social play.
- **Community Visits** – Excursions to museums, libraries, and cultural spaces.

Every experience is designed to inspire curiosity, encourage collaboration, and promote growth.

At Kidspace Club,  
our hands-on  
learning experiences are  
designed to connect  
children with their peers,  
their environment and  
their community.



# Kidspace Annual Program

Term	Term Theme	Topic	Community Focus	Purpose
1	Nature & Environment	Nature Detectives	Environmental Responsibility	Foster connection to nature and awareness of sustainability and environmental responsibility.
2	Connecting to Community	Stories of our land & community	Expanding & Strengthening our Community Connections	Share our stories of community connection, culture & traditions
3	Innovation & Sustainability	Creating Sustainable Futures	Making better choices for our Community	To Identify ways to care for and protect our community environment
4	Creative Arts & Wellbeing	Artful Adventures	Community Creative Arts Exhibition	Promote holistic well-being through creative expression



# Kidspace Term 3 Program Overview

## Term Theme: Innovation & Sustainability

**Topic:** Creating Sustainable Futures

**Community Focus:** Making better choices for our community

**Purpose:** To identify ways to care and protect our community environment

### Term Focus Inquiry Question

*"How can we make better choices to care for our community and protect our future?"*

- Exploring energy, water, and material conservation through interactive experiments, incursions and outdoor inquiry.
- Learning from Indigenous sustainability practices and local environmental experts about caring for Country
- Investigating everyday habits and redesigning them with sustainability in mind- waste audits, composting challenges, and identifying toxins within the environment
- Designing and building using recycled or natural materials to create useful items for community spaces.
- Creating awareness campaigns using posters, art and storytelling to share eco-messages with community

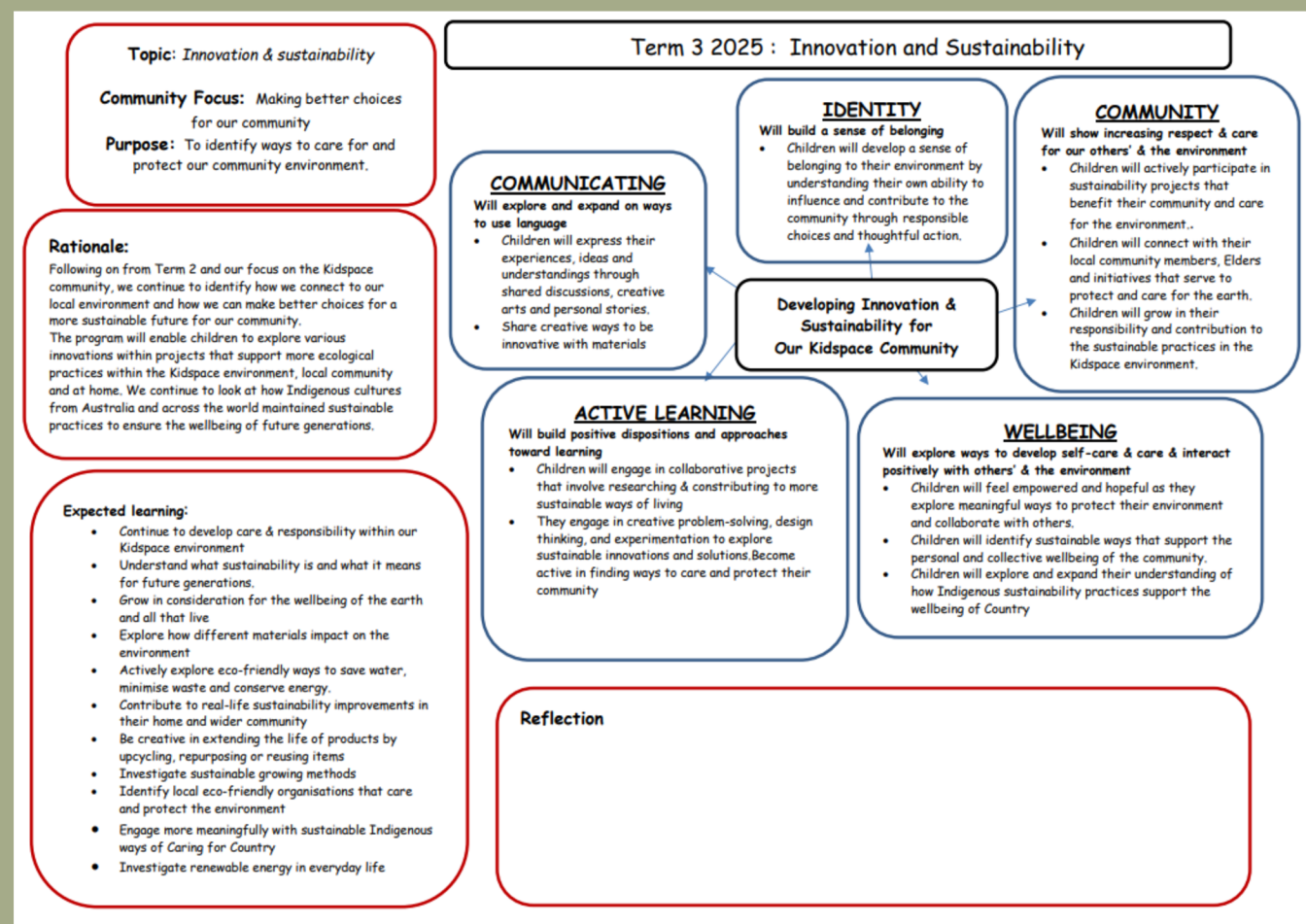




This plan aligns with the My Time, Our Place (MTOPI) National Learning Framework and focuses on fostering well-being and self-care.

It integrates inquiry-based and holistic approaches to learning, emphasising personal growth, cultural and community connections, creativity, and belonging.

The Kidspace program is designed to nurture self-awareness around our identity and place in the world, while fostering a sense of environmental stewardship, sustainable practices, and a heartfelt connection to nature and community.



## Kidspace Term 3 Program Overview

Week	Weekly Theme	Focus & Inquiry Question
Week 1	<b>Sustainable Ways</b>	<b>Focus:</b> Introducing sustainable ways, including honouring Indigenous knowledge and practices for sustainable living. <b>Inquiry Question:</b> What does it mean to be sustainable, and what can we learn from First Nations wisdom?
Week 2	<b>Water Wise Living</b>	<b>Focus:</b> Exploring the importance of water and how to care for it. <b>Inquiry Question:</b> How can we protect and care for our waterways and water sources?
Week 3	<b>Energy Explorers</b>	<b>Focus:</b> Understanding different types of energy and their impact on the planet. <b>Inquiry Question:</b> How do we power our world, and what are better ways to do it?
Week 4	<b>Reduce, Reuse, Recycle</b>	<b>Focus:</b> Investigating waste systems and how to reduce our footprint. <b>Inquiry Question:</b> What happens to our waste, and how can we rethink it
Week 5	<b>Eco-friendly Living</b>	<b>Focus:</b> Discovering eco-friendly daily choices that support people and planet. <b>Inquiry Question:</b> How can we live more responsibly and help our community thrive
Week 6	<b>Creative Change-Makers</b>	<b>Focus:</b> Using creative expression to inspire environmental care and community action. <b>Inquiry Question:</b> How can we inspire others to protect the Earth and be part of positive change?
Week 7	<b>Nature's Design</b>	<b>Focus:</b> Observing patterns and innovations in nature as solutions for sustainability <b>Inquiry Question:</b> What can we learn from nature's designs and eco-systems?
Week 8	<b>Energy and Power</b>	<b>Focus:</b> Evaluating where our power comes from and how we use it. <b>Inquiry Question:</b> Where does our energy come from, and how can we use it more wisely?
Week 9	<b>Invent, Innovate, Inspire</b>	<b>Focus:</b> Encouraging innovation and invention for a better future <b>Inquiry Question:</b> How do ideas become real, and how can we be part of that process?
Week 10	<b>Reflect and Reimagine</b>	<b>Focus:</b> Reflecting on our terms' journey and reimagining sustainable futures <b>Inquiry Question:</b> What will I do differently now to care for the earth and my community

# Children's Voice

## Following child led interests

At Kidspace we ensure that we are integrating the spontaneous learning, needs and interests of the children within the conceptual themes of the term program.

### CHILDREN'S VOICE

Outdoor picnics in the yard.  
Teddy bear tea party  
(A & E)

Beads & bracelets  
(N, L)

Science experiments,  
mixing & pouring,  
creating potions  
(C & H)

Outdoor assault course  
(S & B)

Cubby's making base camps,  
outdoor building  
(H, C, B & J)

Exploring Nature,  
insects & bug hunts,  
sensory and craft activities with insects  
(J & S)

Magic tricks,  
magic show,  
creating a magic box  
(A)

Butterfly fairy garden activities  
(H & I)

Planting & how things grow  
(A)

Kidspace recipe book  
Creating our own recipe book with family traditional recipes from home  
(L & S)

Goop - Oobleck sensory activities  
(J, B & H)

### Weekly Theme

## SUSTAINABLE WAYS

Introducing sustainability and honouring Indigenous sustainable ways

### Eco Focus

## CARING FOR COUNTRY

### Exploration

## INDIGENOUS WISDOM

Exploring ancient world views for regenerating, restoring and maintaining eco-logical balance with the natural environment.

### YARNING CIRCLE

**What does it mean to be sustainable?**



### Weekly Group Challenge

## EARTH'S RESOURCES MIND MAP



### MONDAY

*In service fun*

### TUESDAY

*In service fun*

### WEDNESDAY

*In service fun*

### THURSDAY

*In service fun*

### FRIDAY

*In service fun*



## EARTH CONNECTION & CARE

Investigating our relationship with the earth  
Exploring earth's resources



### Creation Station



### Creation Station



### Creation Station



### Creation Station



### Creation Station



### Cook Book Creations



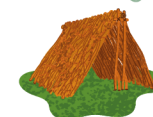
### Huts & Shelters Challenge



### Cook Book Creations



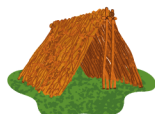
### Huts & Shelters Challenge



### Cook Book Creations



### Huts & Shelters Challenge



### Excursion

## Ben Bennett Park

## PICNIC & PLAY



### Disco Party



### Sensory Play



### Incursion

## PICNIC PARTY

Bring your favourite soft toy buddy



### Weekly Theme

## WATER WISE LIVING

Exploring the importance of water and how to care & conserve it

### Eco Focus

## ECO-SYSTEMS



### Exploration

## HEALTHY WATERWAYS

Exploring our local waterways and their eco-systems.  
How can we take care of our waterways?

### YARNING CIRCLE

**Why is water so important?**



### Weekly Group Challenge

## BEACH CLEAN UP



### MONDAY

*In service fun*

### TUESDAY

*In service fun*

### WEDNESDAY

*In service fun*

### THURSDAY

*In service fun*

### FRIDAY

*In service fun*



## EARTH CONNECTION & CARE

Exploring how water is life for many  
Cleaning up our water ways



Creation Station

## WATER PAINTING



Creation Station

## HABITAT DIORAMA



Creation Station

## CRAYON & DYE



Creation Station

## HABITAT DIORAMA



Creation Station

## WATER PAINTING



Cook Book Creations



Picnic Tea Party



Cook Book Creations



Posters



STEM challenge

## SAIL BOATS RACES



Excursion

## Currimundi Lake Cleanup



Exploring Eco-systems

## WATER ANIMALS!



Walking Water Experiments



Ninja Course Challenge



Sensory Play



Sensory Play

## WATER COLOUR MIXING



Sensory Play



### Weekly Theme

## ENERGY EXPLORERS

Exploring different types of energy that powers our world

### Eco Focus

## CLEAN ENERGY

### Exploration

## POWERING OUR WORLD

Understanding different types of energy and their impact on the planet.  
Investigating ways to conserve our energy resources

### YARNING CIRCLE

How do we power our world in better ways?



### Weekly Group Challenge

**KIDSPACE**  
**ENERGY AUDIT**



### MONDAY

*In service fun*

### TUESDAY

*In service fun*

### WEDNESDAY

*In service fun*

### THURSDAY

*In service fun*

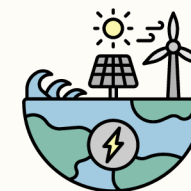
### FRIDAY

*In service fun*



## EARTH CONNECTION & CARE

Investigating how much energy we use and the impact on our environment



### Creation Station



### Creation Station



### Creation Station



### Creation Station



### Creation Station



### Ball Games



### Cook Book Creations



### Cook Book Creations



### STEM challenge



### STEM challenge



### Science Investigations



### Relay Races



### Ball Games



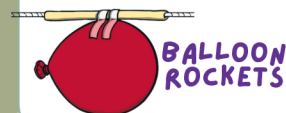
### Disco Party



### Sensory Play



### STEM challenge



### Sensory Play



### Weekly Theme

## REDUCE, REUSE, RECYCLE

Investigating what waste we produce and how we manage it

### Eco Focus

## MINIMISING WASTE

### Exploration

## RETHINKING WASTE

Exploring what we can do to minimise our consumption of products and rethink our waste systems

### YARNING CIRCLE

Where does all our rubbish go?



### Weekly Group Challenge

**RETHINKING  
OUR WASTE AT  
KIDSPACE**



### MONDAY

*In service fun*



### TUESDAY

*In service fun*

## EARTH CONNECTION & CARE

Exploring ways to redirect and minimise our waste  
The 8 R's - rethink, refuse, reduce, refurbish, repair, repurpose, recycle



### WEDNESDAY

*In service fun*

### THURSDAY

*In service fun*

### FRIDAY

*In service fun*

### Creation Station



### Creation Station



### Creation Station



### Creation Station



### Creation Station



### STEM Challenge



### Sort this out!



### Cook Book Creations



### STEM challenge



### Cook Book Creations



### Scavenger Hunt



### Excursion

Caloundra Resource  
Recovery Centre



### STEM challenge



### Posters



### Pinata Party



### Sensory Play



### Posters



### Scavenger Hunt

