

# Kidspace

COMMUNITY HUB

## Term 2 Program



### Connect with Us



Call Us  
**0483 987 450**



Visit Our Website  
[www.kidspaceclub.com.au](http://www.kidspaceclub.com.au)



Email Us  
[admin@kidspaceclub.com.au](mailto:admin@kidspaceclub.com.au)



Our Location  
**19 Third Ave, Caloundra, 4551**





## About Us

At Kidspace Homeschooling Hub, we provide a vibrant and enriching space for homeschoolers to engage in meaningful play, build essential life skills, and form lasting friendships.

Our drop-off care service is designed to support homeschooling families by fostering social connections and community engagement in a safe and nurturing environment.

Kidspace is a purposefully different community hub with an experienced educational team dedicated to providing children with community centred opportunities for recreation, leisure & holistic learning.

***Kidspace community hub provides education through real world experiences.***

## OUR CORE VALUES

### Community

We are committed to facilitating an inclusive community hub where children and families experience a strong sense of belonging, connection & support.

### Connection

We are committed to fostering connection through social opportunities, community engagement and environmental care.

### Experiential Learning

We continuously strive to provide experiential opportunities that stimulate, challenge and engage children in life skills and holistic learning.







# Our Experiences

*Some of our experiential learning includes:*

- **Nature-Based Adventures** – Excursions to parks, reserves, and natural spaces along the Sunshine Coast.
- **Creative Arts & Performance** – Opportunities for visual arts, music, dance, and drama.
- **Mind-Body Connection Workshops** – Social-emotional learning through movement and mindfulness.
- **Interactive Science & STEM** – Engaging activities that inspire innovation and curiosity.
- **Collaborative Games & Play** – Sports, group challenges, and meaningful social play.
- **Community Visits** – Excursions to museums, libraries, and cultural spaces.

Every experience is designed to inspire curiosity, encourage collaboration, and promote growth.

At Kidspace,  
our hands-on  
learning experiences are  
designed to connect  
children with their peers,  
their environment and  
their community.





# Kidspace Annual Program

Term	Term Theme	Topic	Community Focus	Purpose
1	Nature & Environment	Nature Detectives	Environmental Responsibility	Foster connection to nature and awareness of sustainability and environmental responsibility.
2	Connecting to Community	Stories of our land & community	Expanding & Strengthening our Community Connections	Share our stories of community connection, culture & traditions
3	Innovation & Sustainability	Creating Sustainable Futures	Making better choices for our Community	To Identify ways to care for and protect our community environment
4	Creative Arts & Wellbeing	Artful Adventures	Community Creative Arts Exhibition	Promote holistic well-being through creative expression





# Kidspace Term 2 Program Overview

## Term Theme: Connecting to Community

**Topic:** Stories of Our Land and Community

**Community Focus:** Expanding and Strengthening Our Community Connections

**Purpose:** To share our stories of community connection, culture, and traditions.

### Term Focus Inquiry Question

*"How do stories help us understand our place, culture, and connection to community?"*

- Exploring and expressing identity through community maps, memory collages, and storytelling prompts.
- Learning about the land's history and local Indigenous stories that shape our shared connection to place.
- Strengthening intergenerational and cultural connections through guest speakers, excursions, and collaborative art projects.
- Supporting emotional wellbeing through storytelling circles, community gratitude reflections, and peer dialogue.
- Building social awareness and active citizenship through small acts of community kindness and care.



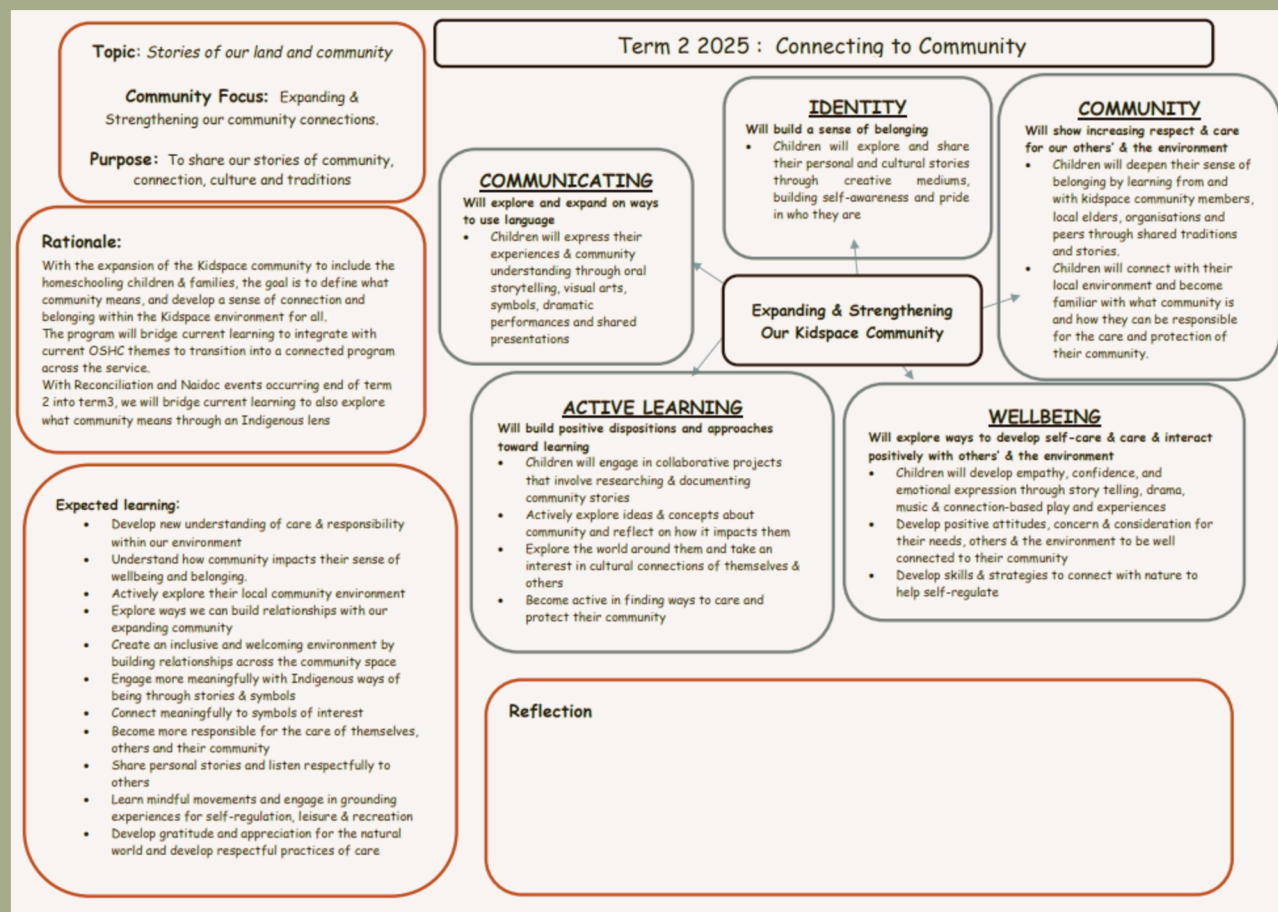




This plan aligns with the My Time, Our Place (MTOPI) National Learning Framework and focuses on fostering well-being and self-care.

It integrates inquiry-based and holistic approaches to learning, emphasising personal growth, cultural and community connections, creativity, and belonging.

The Kidspace program is designed to nurture self-awareness around our identity and place in the world, while fostering a sense of environmental stewardship, sustainable practices, and a heartfelt connection to nature and community.





## Kidspace Term 2 Program Overview



Week	Weekly Theme	Focus & Inquiry Question
Week 6	<b>Expanding our Community / Introducing Reconciliation Week</b>	<b>Focus:</b> Preparing for first homeschool hub sessions. Developing belonging- feeling safe, seen, and strong together. <b>Inquiry Question:</b> How do we build a safe and strong learning community together
Week 7	<b>Belonging to our community</b>	<b>Focus:</b> Exploring our community <b>Inquiry Question:</b> Where and how do we belong?
Week 8	<b>Knowing our Community: Stories of Land, Sky and Sea</b>	<b>Focus:</b> Deep listening to Community's stories. <b>Inquiry Question:</b> What stories can we share about our connections to our land, sky, and sea community?
Week 9	<b>Living Culture: Language, dance and cultural expression</b>	<b>Focus:</b> Exploring how culture is shared through language, movement, and story. <b>Inquiry Question:</b> How is culture passed on through language and dance?
Week 10	<b>Celebrating Culture, Country, and Community (Preparation NAIDOC Week)</b>	<b>Focus:</b> Honouring all voices, histories, and strengths in our Community. <b>Inquiry Question:</b> How are we connected to our past, present and future?

Please Note: Term 2 is all about relationship building, getting to know each-other and creating a safe environment to develop a sense of belonging. All excursions will commence in Term 3.



**MONDAY**

**TUESDAY**

**WEDNESDAY**

**THURSDAY**

**FRIDAY**

*Weekly Theme*

### WELCOME TO KIDSPACE

Settling In  
Relationship building  
PLAY PLAY PLAY

*Storytelling*

### INDIGENOUS SYMBOLS

*Exploration*

### INDIGENOUS WISDOM

Understanding how  
Indigenous stories were told  
through symbols

*YARNING CIRCLE*

Reconciliation  
& relationships



*Weekly Group Challenge*

**RECONCILIATION  
FLAGS MURAL**



*Excursion*

*Excursion*

*In service fun*

*In service fun*

*Excursion*

*Homeschool  
Hub  
Opens  
Wednesday 28th*

### RELATIONSHIP BUILDING

Getting to know each  
other games



Creation Station



Creation Station



Cooking Experience



STEM challenge



Flag Art



Disco Party



Symbol station



Sensory Play



*Maleny Show Day  
Vacation Care*

Come join us at  
Rollardrome  
book on our website





### Weekly Theme

## BELONGING TO OUR COMMUNITY

Exploring our community?  
Where & how do we belong?

### Storytelling

## DREAMTIME STORIES

### Exploration

## RETELLING STORIES

Puppet shows  
Shadow puppets  
Indigenous Symbols  
Role playing

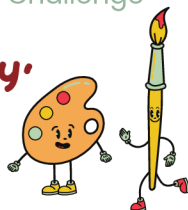
### YARNING CIRCLE

**What is a  
community?  
How do we  
belong?**



### Weekly Group Challenge

## 'COMMUNITY' MURAL



### MONDAY

*In service fun*



### TUESDAY

*In service fun*

## RELATIONSHIP BUILDING

Getting to know each other games



### WEDNESDAY

*In service fun*

Creation Station



Cooking Experience



Puppet Making



Sensory Play



### THURSDAY

*In service fun*

Creation Station



STEM challenge



Puppet Making



Sensory Play



### FRIDAY

*In service fun*

Creation Station



Cooking Experience



Puppet Show Performances





### Weekly Theme

## KNOWING OUR COMMUNITY

Community stories of land, sky & sea Country

### Storytelling

## OUR COMMUNITY STORIES

### Exploration

## SHARING LOCAL STORIES

listening & sharing our stories  
Asking questions about stories

### YARNING CIRCLE

## Exploring our community stories



### Weekly Group Challenge

## 'MAPPING OUR COMMUNITY



### MONDAY

*In service fun*

### TUESDAY

*In service fun*

### WEDNESDAY

*In service fun*

### THURSDAY

*In service fun*

### FRIDAY

*In service fun*



Creation Station



Creation Station



Creation Station



Creation Station



Creation Station



STEM Challenge



Cooking Experience



STEM Challenge



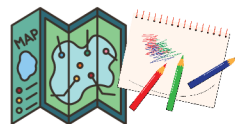
Cooking Experience



STEM Challenge



Map making



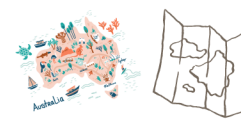
Mindful Movement



3D Maps



Map making



Disco Party



Sensory Play



Sensory Play



Sensory Play





### Weekly Theme

## LIVING CULTURE

Expressing culture through language, art, dance & music

### Storytelling

## TELLING & SHARING OUR STORIES

### Exploration

## EXPRESSING STORIES THROUGH THE ARTS

Telling our stories through music, art, dance & drama

### YARNING CIRCLE

**Sharing our family stories**  
**How can we express our stories?**



### Weekly Group Challenge

## 'STORY QUILT'



### MONDAY

*In service fun*

### TUESDAY

*In service fun*

### WEDNESDAY

*In service fun*

### THURSDAY

*In service fun*

### FRIDAY

*In service fun*



### Creation Station



### Creation Station



### Creation Station



### Creation Station



### Creation Station



### Cooking Experience



### Cooking Experience



### Cooking Experience



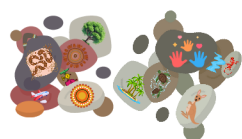
### Cooking Experience



### STEM Challenge



### Story Stones



### Let's Create Sounds



### Mapping our stories



### Sharing Stories



### Sharing our Stories Performances



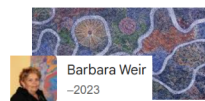
### Sensory Play



### SOUND SCAPES



### Indigenous art appreciation



### International Flags





### Weekly Theme

## CELEBRATING OUR COMMUNITY

Honouring all voices, histories & strengths in our community

### Storytelling

## PAST, PRESENT & FUTURE

### Exploration

## EXPLORING OUR HISTORIES

How are we connected to the past, present & future

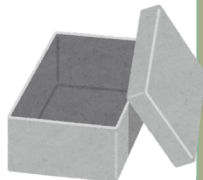
### YARNING CIRCLE

Exploring & sharing our histories & traditions



### Weekly Group Challenge

**'TIME CAPSULE'**



### MONDAY

*In service fun*

### TUESDAY

*In service fun*

### WEDNESDAY

*In service fun*

### THURSDAY

*In service fun*

### FRIDAY

*In service fun*



Creation Station

**FANTASY FUTURE**

Creation Station

**FANTASY FUTURE**

Creation Station

**FANTASY FUTURE**

Creation Station

**FANTASY FUTURE**

Creation Station

**FANTASY FUTURE**

STEM Challenge



Cooking Experience



STEM Challenge



Cooking Experience



STEM Challenge



Time machine adventures



Mindful Movement



Time machine adventures



Time machine adventures



Community Celebration



Sensory Play



Post card challenge



Post card challenge

